

Construction continues . . . as of 12/16/09



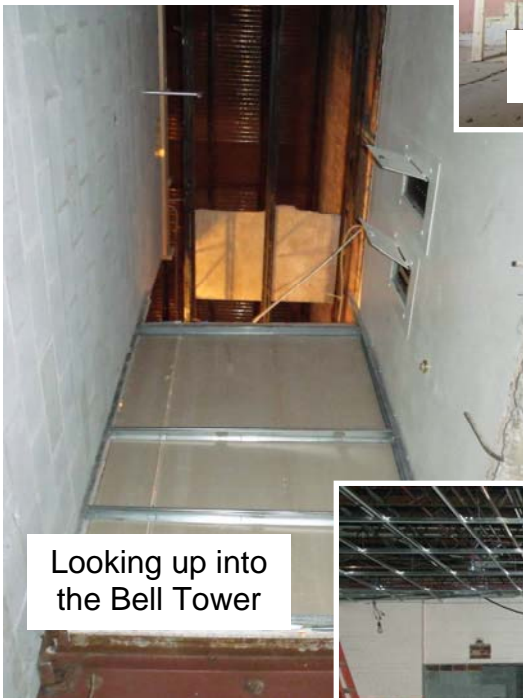
Putting in a steel beam for support under the Chancel area.



Framing in the old stage area



Old Adult Fellowship closet & stairwell



Looking up into the Bell Tower



Sealing the Fellowship Hall Exterior Wall



Blocking off the old door and window in the Fellowship Hall

Elevator Equipment Room

Room off Chancel for better storage

